



HopeLine

Refuge House *Saving Lives, Building Hope, Ending Violence!*

August 2009

Jewelry Designer Gives Back to Refuge House

As a survivor of domestic violence, Regina "Gina" McDonald has searched for a way to help ensure that the doors of Refuge House remain open for others seeking a safe haven.

Her dream came true in the creation of T.A.I.S.I., a shop that showcases Gina's original jewelry designs.

"Refuge House has been blessed by many artists who give their art to our cause; Gina is a gem," said Diane Jefferson, Refuge House Director of Development.

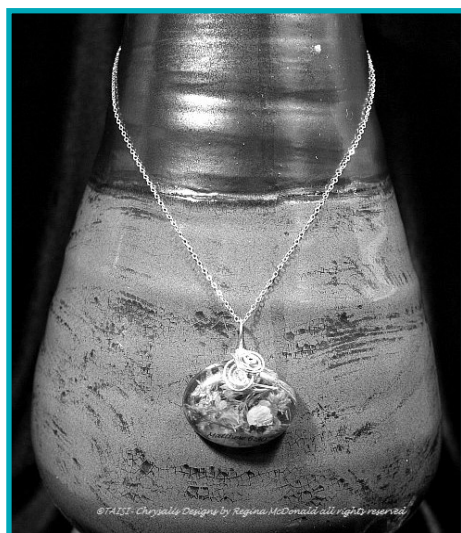
Gina, who resides in Chattahoochee, gives forty percent of the sales from the

T.A.I.S.I. to Refuge House. The jewelry is available for sale in the Merle Norman Day Spa in Marianna 4451 Lafayette St - or via the internet at www.chrysalisdesigns.net

"This shop is a labor of love for a truly worthy cause," Gina said, "I hope it will make a difference in the lives of women and children deserving of a second chance

at life. It's hard to believe that such horrific abuse happens to women in our civilized society, but the problem is real and the need to combat it is great."

Gina's jewelry line is made from an acrylic casting material which can be embedded with items that have personal meaning to the wearer, even photos. Pendants contain plant life, which include flowers, seeds and pods. Some have scriptures and inspirational messages. Custom orders are welcome.



Gina's jewelry line is made from an acrylic casting material

In addition to the proceeds from the sale of the specialty jewelry, Gina is also supporting Refuge House by donating her time and talents to teaching classes on jewelry making and contributing the registration fees to the agency. If you have a group who would like to schedule a class, email: chrysalisdesignsbyrm@yahoo.com.

Rosenthal Named as Presidential Advisor

Refuge House is proud to recognize one of our own. Former executive director of Refuge House Lynn Rosenthal has been named the White House Advisor on Violence Against Women. While directing the Florida Coalition Against Domestic Violence and the National Network to End Domestic Violence.



Lynn Rosenthal
Presidential Advisor

Rosenthal met and worked closely with then-Sen. Joe Biden, now the vice president. In 1999, Rosenthal received the Florida Governor's Peace at Home Award for improving the lives of women and their children affected by domestic violence. For the past two years Rosenthal has been executive director of the New Mexico Coalition Against Domestic Violence.

Congratulations Lynn!

Meg's Message

Domestic and sexual violence victims seeking to have a judge order an abuser to stay away go through a legal proceeding called an injunction petition. The process is lengthy, involves lots of paperwork, and requires an appearance before a judge. Thankfully, there are Refuge House volunteers like "Jenna" who step into the picture to provide a supportive hand and guide a hurting person through unfamiliar waters.

"I absolutely love working one-on-one with victims, connecting with each person, and advocating for them," said Jenna, who along with other Refuge House courthouse volunteers assist nearly 1,000 people each year through a process that many victims might simply give up on because they are intimidated by the process.

Jenna has known for a long time that she "had a heart for being there for other women," so that no one has to go through abuse feeling alone or isolated. As a social work student at Florida State University, Jenna enrolled in Kelly Otte's Family Violence class and immediately felt she found her direction and a connection with Refuge House. (Thanks, Kelly!) And, when Brittany Peters, our amazing Courthouse Coordinator, described the courthouse work to Jenna during her volunteer orientation class, Jenna was hooked.

"The courthouse setting gives me a chance to learn about how the legal system affects women, and how to assist beyond the courthouse doors with referrals to other Refuge House services and other supportive agencies. This is my life's purpose, and it's the greatest feeling in the world."

Thank you Jenna and thanks to everyone who gives time and money to help the Refuge House cause.



Meg Baldwin
Executive Director

Zonta launches Project BED, BATH and HOPE

To give women and children a sense of worth as they begin the healing process from abuse, each survivor and their children are given new sheets and towels upon arrival. Zonta Club of Tallahassee has launched Bed, Bath and Hope to help Refuge House meet this critical need.

"The goal of the Zonta Bed Bath & Hope project is to set up a community support system where it is 'raining sheets and towels' on Refuge House," said Zonta project chair Mary Garvin. The club has set a goal to raise 100% of the dollars needed to pay for the five-hundred sets of sheets and towels needed each year.

The club is hoping the community will help them meet their goal. Checks should be made payable to Refuge House, Inc., and send to P. O. Box 20910, Tallahassee, Florida 32316. Please note in memo section Bed, Bath and Hope Project.

Refuge House is also accepting online contributions via www.refugehouse.com/support.html. If you have any questions regarding the Zonta Bed, Bath and Hope Project, please contact Cassandra D. Jenkins at (850) 656-1233 or dcs1028@embarqmail.com.



Mary Garvin
Zonta Chair

MusicFest "Sounds of Hope" Set for November at Unity

The first weekend in November has been booked at Unity Eastside Church to host MusicFest 2009: Sounds of Hope, a fundraiser for Refuge House.

According to Linda Collins, who is coordinating the event, the festival will feature acoustic folk, blues, and Irish music. All proceeds will benefit Refuge House.

The event will take place on the church grounds on Buck Lake Road on Sunday, November 8, 2009, at 1:00 p.m. In addition to great music, there will be a Silent Auction and other fun activities.

Musicians who have confirmed as of today are Sir Charles Atkins, the Ned Devines, the New 76ers, Stephen Hodges, Frank Lindamood, Darryl Steele of Crooked Shooz, Mike Rychlik of the Harvest Gypsies, PiaVio (Steve Sternberg & Judy Hague) and John Sullivan.

"I am so grateful to now be able to give back by spearheading this effort," says Collins, who is a former client of Refuge House. Volunteers are needed and sponsorship opportunities are available. You may contact Linda Collins at 671-3674 or MusicFest@unity-eastside.org.

Heartfelt Thanks to Our Community Supporters:

Ladies Home Mission of Chapel Hill Baptist Church

When children at Refuge House are going through such a rough time in their lives, the Ladies Home Mission of Chapel Hill Baptist Church wants them to know that they are loved and that children at the shelter begin the new school year on the right foot with brand new book bags.

Junior Girl Scout Troop #10

Girl Scouts Jenna Tuckerman, Emily Hoogerheyde and Cailan Gerety recently presented the Refuge House with an emergency preparedness kit to be donated to a family. The troop created this kit as part of their Weather Watch badge. This project gave the girls the opportunity to learn about being prepared for hurricanes and to become more active in their community through helping others.

Jack and Jill Foundation

The Tallahassee Chapter of Jack and Jill of America held their "Jazzin' with Jack and Jill" raising over \$1,300 for Refuge House to demonstrate their commitment to helping the youngest victims of domestic violence, our children. The event's coordinator, Dr. Gwendolyn Singleton says, "We are delighted that our gift will provide a nurturing atmosphere where vulnerable children can gain support and education about healthy family relationships and help prevent repeated cycles of violence that may occur in their adult lives."

Alpha Chi Omega

The Beta Eta chapter of Alpha Chi Omega National Women's Fraternity recently contributed diapers, kitchen supplies and \$2,327 raised during their golf tournament to Refuge House. In 1989 Alpha Chi Omega adopted domestic violence awareness and helping survivors of domestic violence as their national altruistic endeavor.

Temple Israel and John Smithson

John Smithson, a member of Temple Israel, has taken a leadership role in support of Zonta's Bed Bath and Hope - thanks to John for his leadership and generous gift.

If you or your organization would like to help Refuge House with a fundraiser or gift, please contact Development Director Diane Jefferson at 850-922-6062 or email her at djefferson@refugehouse.com

Mark Your Calendar! November 26, 2009 • Turkey Trot Walk/Run • Southwood Office Complex • 7:30 a.m.



Refuge House

Saving Lives, Building Hope, Ending Violence!

Apalachicola
850-653-3313

Crawfordville
850-926-9005

Tallahassee
850-922-6062

Madison
850-973-4144

Monticello
850-342-3518

Perry
850-584-8808

Quincy
850-627-9377

P.O. Box 20910 * Tallahassee, Florida 32316 * 24 Hour Crisis Line 850-681-2111 Local or 800-500-1119 Toll Free



Refuge House, Inc. is registered with the state under the Solicitation of Contributions Act 1991, Registration Number CH1682. Refuge House, Inc. receives 100% of each contribution. A copy of the official registration may be obtained from the Division of Consumer Affairs by calling toll-free, within the state, 1-800-435-7352. Registration does not imply endorsement, approval, or recommendation by the state.